

# KARIBAN

**REFERENCE :** K517

**SIZES :** S\_M\_L\_XL\_XXL\_3XL

**COMPOSITION :**

Main fabric : Cotton poplin 110 100%cotton

Fabric 1 : Y/D Cotton poplin - 110 Striped fabric

For inner collar band, inner cuff and inner front tab 100%cotton

**WEIGHT :**

Main fabric : 110 gsm

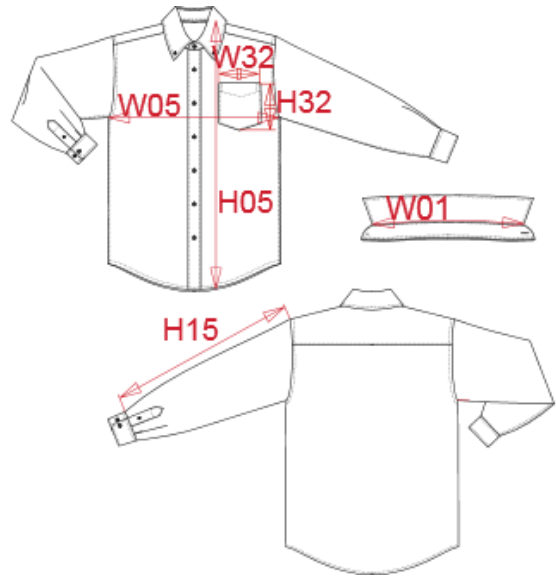
Fabric 1 : 110 gsm

**TECHNICAL DETAIL :**

Garment washed

**ARTICLE WEIGHT :**

240 gr/pc



DESCRIPTION
<b>Français :</b> Chemise popeline lavée manches longues homme
<b>English :</b> Men's long sleeve washed popeline shirt
<b>Nederlands :</b>
<b>Deutsch :</b> PFLEGELEICHTES POPELINE HERREN LANGARM HEMD
<b>Español :</b> CAMISA DE MANGA LARGA POPELINA LAVADA PARA HOMBRE
<b>Italiano :</b> CAMICIA UOMO POPELINE MANICHE LUNGHE
<b>Português :</b> Camisa manga comprida em popeline pré lavada

COLORS	PANTONE SERIGRAPHIE
White	White
Navy	433C

MEASUREMENT						
Description	S	M	L	XL	XXL	3XL
<b>W01</b> Longueur encolure / Neckline length	41,25	42,50	43,75	45	46,25	47,50
<b>W05</b> 1/2 largeur poitrine / 1/2 chest width	51	54	57	60	63	66
<b>H05</b> Hauteur totale dos / Back total height	76	78	80	82	84	86
<b>H16</b> Longueur dessous de manche sans poignet / Under sleeve length without cuff	47,30	47,80	48,30	48,80	49,30	49,80
<b>H32</b> Hauteur poche devant / Front pocket height	13	13	14	14	15	15
<b>W32</b> Largeur poche devant / Front pocket width	12	12	13	13	14	14

CARE LABEL

PACKING	
Box	12 pcs / box S => L:60cm W:40cm H:20cm GW:4.97kg NW:3.32kg M => L:60cm W:40cm H:20cm GW:5.12kg NW:3.47kg L => L:60cm W:40cm H:20cm GW:5.30kg NW:3.65kg XL => L:60cm W:40cm H:20cm GW:5.40kg NW:3.75kg XXL => L:60cm W:40cm H:20cm GW:5.51kg NW:3.86kg 3XL => L:60cm W:40cm H:20cm GW:5.70kg NW:4.05kg