

PR664 Chef's Short Sleeve Stud Jacket

Description

An easy-wearing short sleeve chef jacket with ten metal press studs in a popular wrap over style. Features a Mandarin collar with top-stitching and is available in Black or White.

Product Features:

- Mandarin collar
- Press stud fastening
- Wrap over style

Available In:

XS, S, M, L, XL, 2XL, 3XL, 4XL, 5XL

Certifications:

Sedex Member

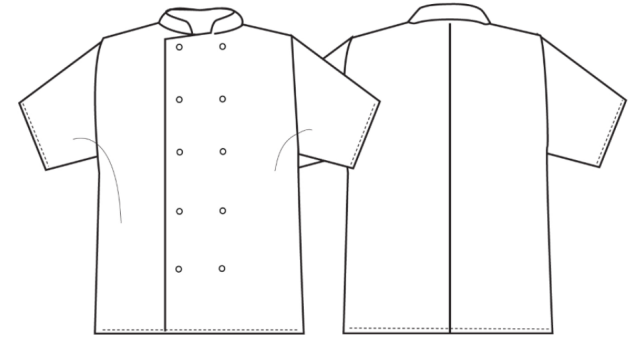


Colours:

| Colour | Pantone | C | M | Y | K |
|--------|---------|---|---|---|-----|
| Black | Black c | 0 | 0 | 0 | 100 |
| White | White | 0 | 0 | 0 | 0 |

Fabric:

65% Polyester, 35% Cotton Twill, 195gsm.



Suggested Decoration:

Screen Print, Transfer Print, Embroidery

Country of Origin:

Bangladesh

Commodity Code:

6211331000

Features:



Wash Care:



Carton Information:

| Sizes | Carton | Pack | SKU's | Carton Weight | Carton Dimensions |
|-----------|--------|------|-------|---------------|-------------------|
| All sizes | 24 | 6 | 18 | 10kg approx. | 60cmx40cmx22cm |

Garment Sizes:

| Call Size | XS | S | M | L | XL | 2XL | 3XL | 4XL | 5XL |
|-----------------|----|-----|-----|-----|-----|-----|-----|-----|-----|
| Chest to fit" | 30 | 34 | 38 | 42 | 46 | 50 | 54 | 58 | 62 |
| Chest to fit cm | 77 | 87 | 96 | 107 | 117 | 126 | 136 | 146 | 156 |
| Chest actual cm | 98 | 106 | 114 | 122 | 130 | 138 | 134 | 154 | 162 |
| Back length cm | 76 | 76 | 76 | 76 | 76 | 76 | 76 | 76 | 76 |