


NS921  
Pull col V Lyocell TENCEL™ femme



50% coton biologique / 50% Lyocell TENCEL™\* Jauge 12 Coupe regular  
Epaules tombantes Col V Bord côte 1x1 à l'encolure, bas de manches  
et de vêtement Tricoté en « Fully fashion » \*TENCEL™ est une marque  
de Lenzing AG

 250 g/m<sup>2</sup> 

Tailles

 XS - S - M - L - XL - XXL

Informations Complémentaires


Logistique

 5  20


Pays d'origine

 BD - Bangladesh



Code douanier

 61103099

Conditions de lavage

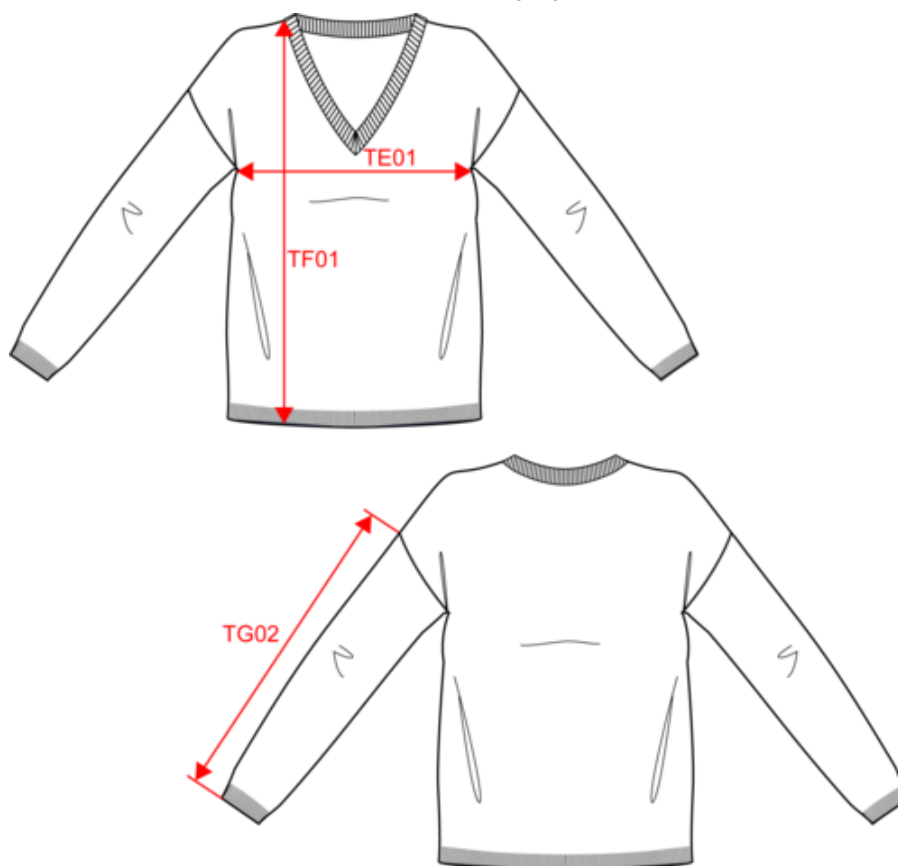
Couleurs

 Black  
 Gemstone Green  
 Ivory  
 Navy Blue

Certifications



Dimensions (cm)



Mesures en cm	XS	S	M	L	XL	XXL
TE01 - 1/2 largeur poitrine à 1.5cm de l'emmanchure	50.50	53.50	56.50	59.50	62.50	65.50
TF01 - Hauteur totale de l'HSP	59.00	61.00	63.00	65.00	67.00	69.00
TG02 - Longueur manche longue	43.50	44.25	45.00	45.75	46.50	47.25

**NS921**  
Pull col V Lyocell TENCEL™ femme

**Informations Couleurs**



**Black**  
RVB : 35,35,37  
Pantone C : Black  
Pantone TCX : 19-4004TCX



**Gemstone Green**  
RVB : 9,132,117  
Pantone C : 562C  
Pantone TCX : 17-5430TCX



**Ivory**  
RVB : 236,231,218  
Pantone C : 7534C  
Pantone TCX : 11-0701TCX



**Navy Blue**  
RVB : 41,45,57  
Pantone C : 433C  
Pantone TCX : 19-4010TCX

**Logistique**



5



20

Sizes	Width (cm)	Height (cm)	Length (cm)	Net weight (kg)	Gross weight (kg)	Pieces/Box	Pieces/Bundle
XS	40.00	19.00	60.00	5.30000	6.70000	20	5
S	40.00	19.00	60.00	5.60000	7.00000	20	5
M	40.00	19.00	60.00	6.10000	7.50000	20	5
L	40.00	22.00	60.00	6.50000	8.00000	20	5
XL	40.00	22.00	60.00	6.90000	8.40000	20	5
XXL	40.00	22.00	60.00	7.30000	8.80000	20	5